



LED Trivision Display



SMF-30LED



SMF-50LED

Description:

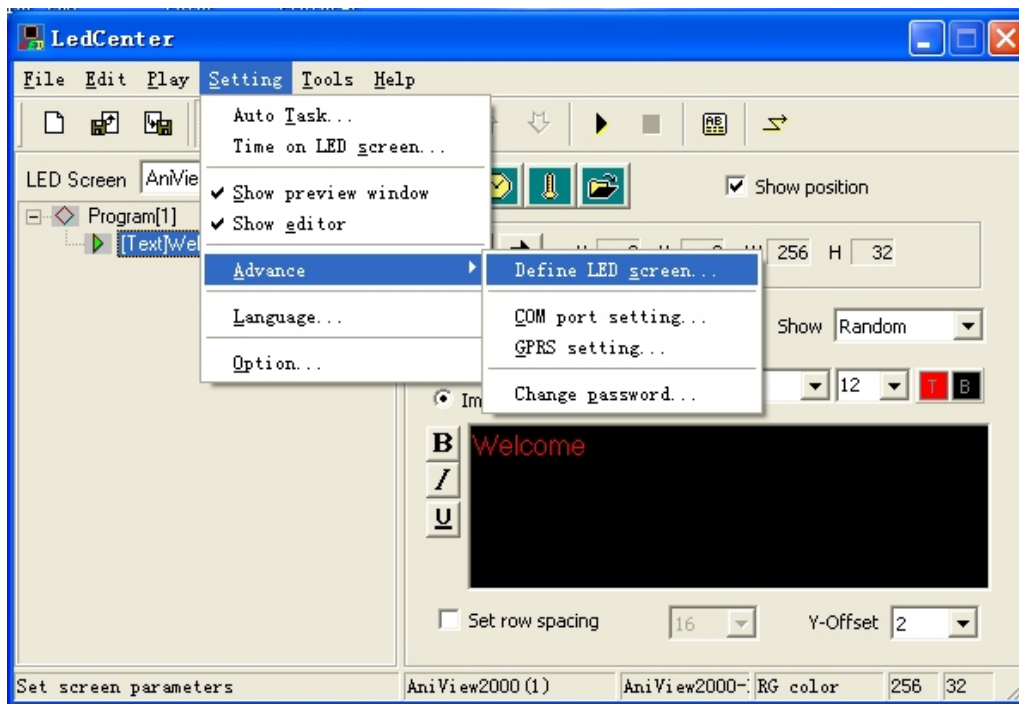
The combination of LED display and trivision, a creative product. It can show 3 pictures as normal trivision display. The below LED display can show latest news, weather report, discount message or current time. It can be used in the waiting room, shops, elevators. etc. LED screen can show multi-languages.



LED Trivision Display



LED driver CD&connection cable



LED Driver Program
(easy to learn and use)



LED Trivision Display



SMF-30LED

MAIN TECHNICAL PARAMETERS

1. Main material:

Prism: Special aluminum alloy, environmental protection type with advantages of firm, not easy to cause deformation, durable and not apt to rust.

Cover: Toughtened glass

Body: Wooden box (black)

2. Width of triangular prism: 28mm, thickness 1.2mm

3. Gross/Net Weight: 17kg/14kg

4. Drive: Gear propulsion system. The drive is steadier and the turning is smoother.

5. Drive Axis: solid-core aluminum axis, the twisting force is strong and the drive is smooth.

6. Picture size: 660mmX390mm

7. Frame size: 865mmX625mmX80mm

8. Package size: 970mmX690mmX120mm

9. Picture gap: less than 5mm

10. Pause time of picture: 10 seconds per picture

11. Turning type: Left to right

12. Tri-vision power supply:

Voltage: 220V/110V/24V/12V;

Frequency: 50HZ/60HZ;

Power: 40W.

13. LED color: Three colors (red/yellow/green)

14. LED resolution: 16X128 dots

15. Packing: Full assembled with carton box

16. Running life: Qualified installation will ensure normal service life over 10 years based on 15 hours each day.

PRODUCT CONFIGURATION

Motor: 40W motor produced by joint-venture factory with advantages of low vibration, high performance and long service life.

Control system: self-researched and developed intelligent control system, possessing such functions as active protection, automatic reset and intelligent control picture staying time, etc.

LED fitting part: power cable, remote control, CD, communication cable, installation cable.

LED Trivision Display



SMF-50LED

MAIN TECHNICAL PARAMETERS

1. Main material:

Prism: Special aluminum alloy, environmental protection type with advantages of firm, not easy to cause deformation, durable and not apt to rust.

Cover: Acrylic glass

Body: Aluminum box (black)

2. **Width of triangular prism:** 48mm, thickness 1.2mm

3. **Gross/Net Weight:** 36kg/30kg

4. **Drive:** Gear propulsion system. The drive is steadier and the turning is smoother.

5. **Drive Axis:** solid-core aluminum axis, the twisting force is strong and the drive is smooth.

6. **Picture size:** 950mmX600mm

7. **Frame size:** 1080mmX800mmX85mm

8. **Package size:** 1180mmX900mmX170mm

9. **Picture gap:** less than 5mm

10. **Pause time of picture:** 5-20 seconds per picture (factory setting)

11. **Turning type:** Left to right

12. **Tri-vision power supply:**

Voltage: 220V/110V/24V/12V;

Frequency: 50HZ/60HZ;

Power: 60W.

13. **LED color:** Three colors (red/yellow/green)

14. **LED resolution:** 7.62 distance; 16X128 dots

15. **Packing:** Full assembled with wooden box

16. **Running life:** Qualified installation will ensure normal service life over 10 years based on 15 hours each day.

PRODUCT CONFIGURATION

Motor: 60W motor produced by joint-venture factory with advantages of low vibration, high performance and long service life.

Control system: self-researched and developed intelligent control system, possessing such functions as active protection, automatic reset and intelligent control picture staying time, etc.

LED fitting part: power cable, remote control, CD, communication cable, installation cable.